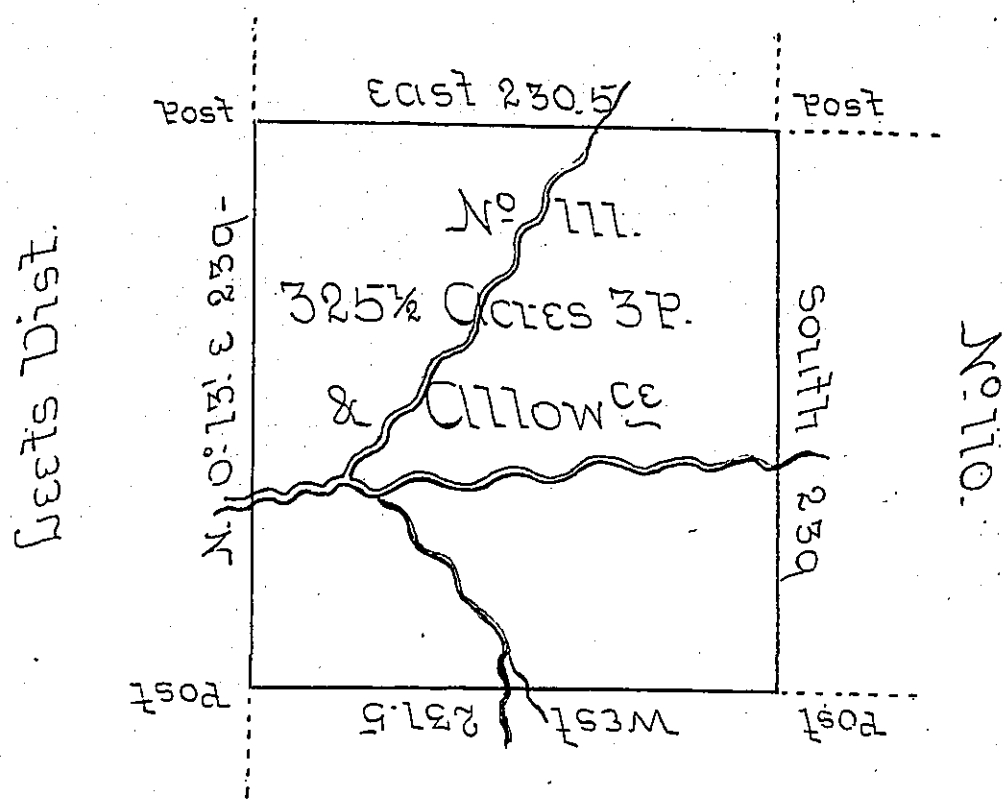


No 108.



Situate on Little Sowerby Creek between the thirtieth & thirty first Parallel in that Part of District No 3 to me allotted on the North side of the River Ohio being Part of the Land appropriated for the Redemption of the Certificates of Depreciation &c^a Surveyed in June 1785 Pursuant to Instructions from Jno Lukens Esq^r Surveyor Gen^l dated at Philada 5th March 1785.

Nat^l Breeding DS

IN TESTIMONY that the above is a copy of the original remaining on file in the Department of Internal Affairs of Pennsylvania, made conformably to an Act of Assembly approved the 16th day of February, 1833, I have hereunto set my Hand and caused the Seal of said Department to be affixed at Harrisburg, this twenty fifth day of October 1905.

George P. Brown
Secretary of Internal Affairs.